



OWNERS MANUAL

JAVA JIG COFFEE BREWER



Reference Table

Please refer to the table below to get a perfect taste of coffee with the JavaJig® Brewer. Use a desired amount of water with the JavaJig Coffee™ Frothing Measuring Cup. Add more water or coffee to adjust for personal taste.

NOTICE: the measuring cup can also be used as a milk frother with a mixer.

Please check at www.JavaJigCoffee.cr for the mixer.

Reference table

Volume (Ounce)	Milliliter (ml)	Coffee powder weight (grams)
5	148	8
6	177	10
7	207	12

COFFEE GRINDER SIZE: 0.5mm-0.85mm

Operation & Use

Operating Instructions for Safe Use

When using electrical appliances, basic safety precautions should be followed, including the following:

1. Read all instructions before using.
2. The JavaJig Coffee™ Brewer is provided with a reusable JavaJig® Holder or a K-Cup® Holder.
3. This is an electrical appliance and must be used and located in accordance with these instructions to prevent electrical shock or injury to persons.
4. This appliance is not intended for use by persons (including children) with reduced physical, sensory or mental capabilities, or lack of experience, and knowledge, unless they have been given supervision or instruction concerning use of the appliance by a person responsible for their safety. Children should be supervised to ensure that they do not play with the appliance. This brewer is to be operated by an adult of sound mind.
5. Check the voltage indicated on the rating label on the appliance does match that of your electrical system.
6. Use indoors on a clean counter top area with an electrical outlet access.
7. Do not immerse cord, plug, or the appliance in water or any other liquid.
8. A release button on top of the brewer is spring loaded and upon opening the top lid, water can be poured directly into the inlet port and water should not overfill the water reservoir (Max 12 oz (354.88 ml)).
9. Avoid the use of an extension cord because the extension cord may over heat and cause a risk of fire. However, if you have to use an extension cord, the cord shall be rated not less than 2,000 watts. Only use an grounded socket to connect the appliance.
10. Do not place on or near a hot gas or electric burner.
11. Only water (or vinegar for cleaning) is to be used in the brewer or your warranty is void! Do not put any other liquids or foods in the inlet port.
12. Do not operate with a damaged cord or plug or after the brewer malfunctions or is damaged in any manner. Contact JavaJig® to report any malfunction or of damage to the brewer.
13. Keep cord away from sharp edges or hot surfaces.
14. To disconnect, unplug from the wall outlet.
15. Do not lift the Brewer while brewing is in progress.
16. Keep the lid closed except when filling the Water Reservoir.
17. This appliance must be grounded using a 3-hole properly grounded outlet.
18. Hot water, steam, spout and capsule holder are hot. Danger of burning injuries.
19. Do not use the brewer for anything other than its intended use.

K-Cup® is a registered trademark of Keurig, Inc., and is in no way affiliated with JavaJig Coffee™.

WARNING



**RISK OF FIRE OR
ELECTRIC SHOCK
DO NOT OPEN**



**WARNING: TO REDUCE THE RISK OF FIRE
OR ELECTRIC SHOCK, DO NOT REMOVE THE
COVER. NO USER SERVICEABLE PARTS ARE
INSIDE. CONTACT www.JAVAJIGCOFFEE.CX.**

CAUTION!

WARNING TO USERS AND PARENTS

There is extremely hot water in the JavaJig® drawer during the brew process. To avoid risk of injury, do not open the drawer or hold the JavaJig® during or immediately after the brewing process (wait at least 15 seconds). Keep the Brewer in its upright position.

Table Of Contents

Using Your JavaJig Coffee™ Brewer

SECTION 1 — SET-UP & FIRST BREW	5
SECTION 2 — SWITCHES & INDICATORS	8
SECTION 3 — CLEANING & MAINTENANCE	
Cleaning the Parts & Holder Assembly	9
De-Scaling	10
Service & Storage	11
SECTION 4 — TROUBLESHOOTING	12
SECTION 5 — WARRANTY	13

Record your Brewer Serial Number here:

See Unpacking Instructions on page 5 for serial number location.

Removing the serial number label from the Brewer will void the warranty.



Section 1

Set-Up & First Brew

Unpacking Instructions

1. Open the box.
2. Reach into the box and grasp the brewer.
3. Remove the top packaging material. Carefully pull the Brewer out of the box.
4. Carefully lift the Brewer and place it upright on a flat, steady surface.
5. Record the serial number for this Brewer on this guide. The serial number can be found on the bottom of the Brewer.
6. For best results, carefully follow manufacturer's instructions when using the Brewer.

WARNING:

Keep all plastic bags away from children.

Section 1

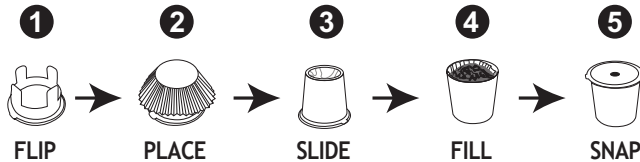
Set-Up & First Brew (Continued)

IMPORTANT: Do NOT use your JavaJig Coffee™ Brewer until it has been set up for its first use.

NOTE: If brewer has been exposed to temperatures below freezing, allow brewer at least two hours to reach room temperature before brewing. A frozen or extremely cold brewer will not operate and if operated could result in damage to the brewer which will void the warranty.

Unwrap cord and plug the brewer into a grounded outlet. Remove all pieces of packing tape from the Brewer and the clear sticker from the logo panel. Remove your reusable JavaJig® and filter. Assemble it as shown below and fill with coffee, tea or cocoa.

Setting Up Your JavaJig® with Filter:



1. **FLIP:** Flip the pronged filter form face down.
2. **PLACE:** Place filter on filter form.
3. **SLIDE:** Slide outer cup over filter form.
4. **FILL:** Fill with your favorite coffee, tea or cocoa.
5. **SNAP:** Snap on lid and brew in your JavaJig Coffee™ Brewer.

Setting Up Your Brewer for First Brew:

1. Fill frothing measuring cup to 12 oz (354.88 ml) with water. (For the best tasting coffee, tea or hot cocoa use bottled or filtered water.)
2. Push button on top to open cover.
3. Pour filtered or bottled water into the inlet port.
4. Close the lid and put the cup or mug on the drip tray.
5. Close the drawer, insert thumb over lever and push down until lever clicks to run an initial cleaning cycle. Please discard initial cleaning water.
6. Pull out the JavaJig® compartment.
7. Place your filled JavaJig® into the JavaJig® Holder and close the drawer.
8. Insert thumb over lever and push down until lever clicks to begin brewing process.
9. Remove JavaJig® after use and discard filter and grounds, rinse and reuse.
10. Enjoy your first cup of JavaJig® brewed gourmet coffee, tea or hot cocoa! (Reminder: De-scale brewer regularly by using a 1/2 cup vinegar water mixture in the reservoir.)

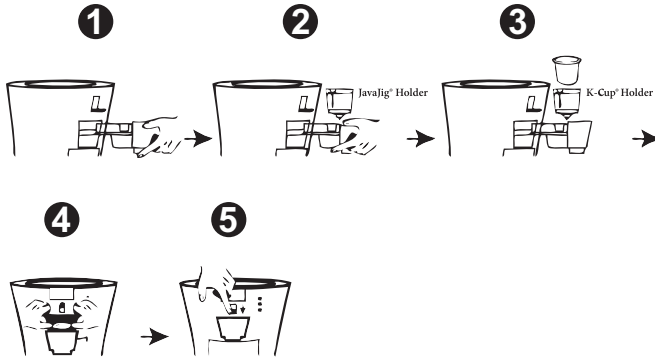


Section 1

Set-Up & First Brew (Continued)

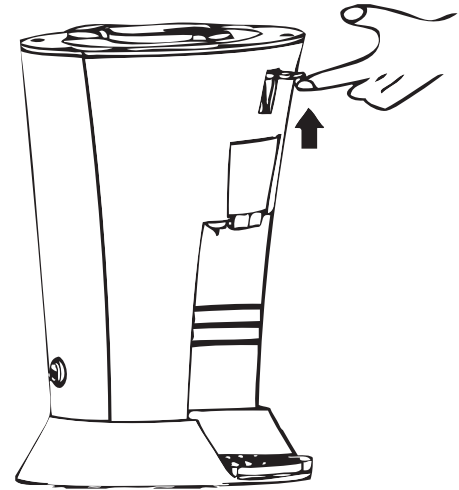
Setting Up Your Brewer for a K-Cup®

1. Pull out the drawer.
2. Push up on the JavaJig® holder from underneath until it releases from the drawer.
3. Replace the JavaJig® holder with the K-Cup® holder.
4. Put your K-Cup® into the holder by pressing your K-Cup® down until seated.
5. Close the drawer, insert thumb over lever and push down until lever clicks to begin the brewing process.
6. After the brewer stops, push up lever, open the drawer, remove the K-Cup® and discard.



Stopping the Pre-heating Process

If you need to stop the pre-heating (when the heating indicating light blinks) to add more water after the process has started, push the Brewing Lever UP to turn the Brewer off. The heating element will shut off and the heating indicating LED will turn off. Push the lever on top to open the cover, add more water inside, push the switch down to repeat the pre-heating operation.



Section 2

Switches & Indicators

LED Indicators During Brewing Process:

i. Power indicating LED (RED)

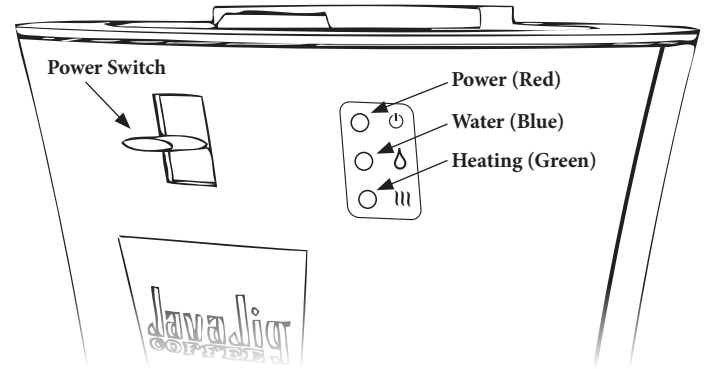
There will be two conditions of the power indicating LED, “BLINKING” and “CONTINUOUS LIGHT”. Only when the cover and brewing switch are both closed the indicating LED will be continuous bright or it will blink.

ii. Water indicating LED (BLUE)

1. Pour desired water into the Brewer and the water indicating LED turns BLUE when the water reaches 2.5 oz or more in the reservoir.
2. During the brewing process, the BLUE LED turns off when the water is exhausted from the reservoir.

iii. Heating indicating LED (GREEN)

1. Pour desired water into the Brewer, both close the cover and flip the brewing switch down to pre-heat the water. The GREEN LED blinks about 65 seconds till the water reaches the brewing temperature.
2. After brewing, the GREEN LED will turn off when the whole brewing process finishes.



Section 3

Cleaning & Maintenance: Parts & Holder Assembly

Cleaning External Parts

Regular cleaning of the brewer's external components is highly recommended.

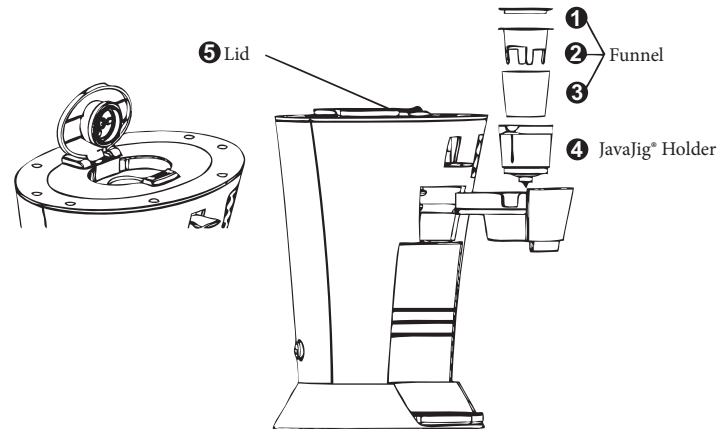
1. Never immerse the brewer in water or other liquids. The housing and other external components may be cleaned with a soapy, damp, non-abrasive cloth.
2. The Drip Tray can accumulate up to 2 oz (59.147 ml) of overflow. The drip tray and drip tray plate should be periodically inspected and rinsed clean. To remove the drip tray assembly, simply slide it toward you, keeping it level at all times to avoid spilling. **The drip tray and drip tray plate should not be placed in the dishwasher. They should be cleaned with a damp, soapy, non-abrasive cloth and rinsed thoroughly.**

Cleaning the JavaJig® Holder Assembly

1. **Cleaning the Parts** —The JavaJig® holder assembly can be placed onto the top shelf of a dishwasher. **NOTE: Use low temperature cycles in the dishwasher.** To remove from the brewer, simply pull out the drawer. Grasp the top of the JavaJig® holder with one hand while pushing up on the bottom of the JavaJig® holder from underneath with the other until it releases. After cleaning, align the JavaJig® holder with the opening using the two front ribs as a guide, and press fit into place from the top.
2. **Cleaning the Funnel** —The funnel can be removed from the JavaJig® holder by pulling on it until it pops off. The funnel is dishwasher safe. To replace it, just snap it back onto the JavaJig® holder assembly.

Cleaning the Lid

The lid should be periodically inspected and cleaned. It should be cleaned with a damp, soapy, non-abrasive cloth and rinsed thoroughly.



Section 3

Cleaning & Maintenance: De-Scaling

Empty the water reservoir then fill it with clean water and return it to the brewer. If needed, repeat above procedures.

CAUTION: Please rinse the water reservoir thoroughly after cleaning. This will ensure that no cleaners or cleaning solutions remain as they may contaminate the water supply in the brewer.

De-Scaling Your Brewer

Mineral content in water varies from place to place. Depending on the mineral content of the water in your area, calcium deposits or scale may build up in your brewer. Scale is non-toxic, but left unattended, it can hinder brewer performance. De-scaling your brewer helps maintain the heating element and other internal parts of the brewer that come in contact with water. The brewer should be de-scaled every 3-6 months to ensure optimal performance. It is possible for calcium deposits to build up faster, making it necessary to de-scale more often.

De-Scaling Instructions

A. PREPARE

Step 1: To begin, you will need the following:

At least 12 oz (354.88 ml) of undiluted white vinegar

Access to an empty sink

JavaJig® frothing measuring cup

Step 2: Empty the water from the water reservoir.

B. FILL AND CLEAN

Step 1: Pour approximately 12 oz (354.88 ml) of equal amounts of undiluted white vinegar and water into the frothing measuring cup.

Step 2: Place the frothing measuring cup on the drip tray plate and run a cleansing brew. **DO NOT USE A JAVAJIG®**, just push the brew switch down. Pour the contents of the large mug into the sink.

Step 3: Repeat the brew process without a JavaJig®.

Step 4: Now let the brewer stand for at least 4 hours while still on.

Step 5: Discard any residual vinegar and rinse the water reservoir thoroughly.

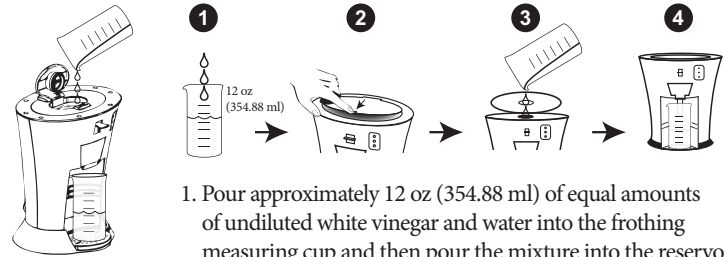
C. RINSE

Step 1: Ensure the water reservoir is filled with fresh water.

Step 2: Place the frothing measuring cup on the drip tray plate and run a cleansing brew. Pour the contents of the frothing measuring cup into the sink.

Step 3: Repeat brew process.

Step 4: You may need to perform additional cleansing brews if you notice any residual taste.



De-Scaling

1. Pour approximately 12 oz (354.88 ml) of equal amounts of undiluted white vinegar and water into the frothing measuring cup and then pour the mixture into the reservoir.
2. Place the frothing measuring cup on the drip tray.

Section 3

Cleaning & Maintenance: Service & Storage

Service

Beyond these recommended cleaning and maintenance procedures, this brewer is not user serviceable. For service, please refer to the Warranty section of this guide.

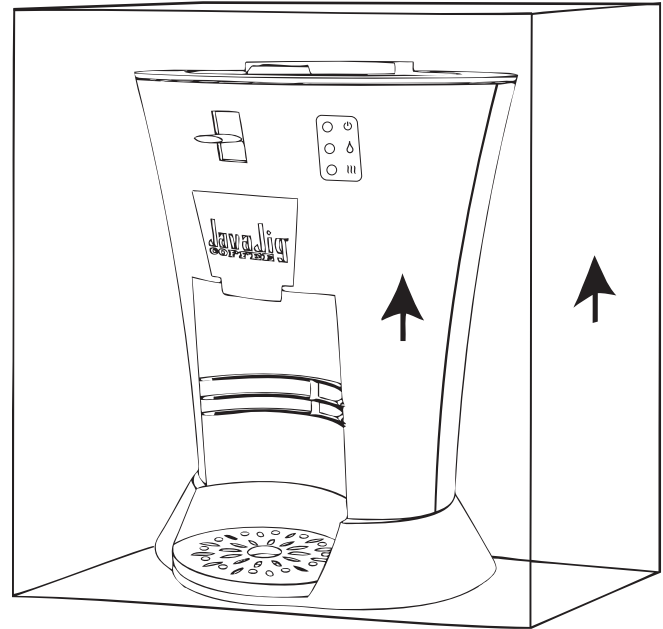
Storage

PREPARE

Empty the water reservoir before storing, and take care to ensure that you store your brewer in a safe and frost free environment. Please be sure to store your brewer in its upright position to avoid water leakage from the inner tank. If you store the brewer in a cold environment, you run the risk of water freezing inside the brewer and causing damage. When you prepare to use it after storage, we recommend rinsing the water reservoir with fresh water and running three cleansing brews without a JavaJig®.

If you plan to move your brewer to a different location, turn the brewer off, unplug it, and empty the water reservoir. If your brewer has been in an environment below freezing, please be sure to let it warm to room temperature for at least 2 hours before using.

Transport your brewer in the upright position to ensure the inner tank does not leak through vent.



Section 4

Troubleshooting

Situation Solution

Brewer does not have power

- Plug the brewer into an independent outlet.
 - Check to be sure that it is plugged in securely.
 - Plug into a different outlet.
 - Reset your home's circuit breaker, if necessary.
-

Brewer will not brew

- After placing the JavaJig® into the JavaJig® Holder (K-Cup® into the K-Cup® Holder), make sure the cover and the switch are both closed and the power indicating LED is continuous bright.
 - Make sure the reservoir is filled with fresh water and the water LED indicating light has turned into BLUE. If not so, add desired water to the reservoir and repeat the brew process.
 - Check with your Brewer if the heating indicating LED is still blinking and wait till it finishes the preheating process.
-

The flow is too slow

- Check your JavaJig® if you have added too much coffee to the JavaJig®.
 - Check your Holder if it is blackened and rinse under faucet.
 - Check your K-Cup® if the needle has fully pierced into the K-Cup® on its top. LED is still blinking and wait till it finishes the preheating process.
-

Situation Solution

Leaking

- Check with your JavaJig® if you have added too much coffee to the JavaJig®.
 - Check if the needle has fully pierced into the K-Cup® on its top.
-

Brewer makes only a partial cup

- Make sure you have poured desired water into the water reservoir and the water LED indicating is continuously lit.
 - Check if you have added too much coffee to the JavaJig® (see page 2).
 - Clean the JavaJig® Holder Assembly or the K-Cup® holder if necessary and rinse under faucet (refer to page 10).
 - If you have repeated the de-scaling procedure on your brewer two times and it is still only brewing a partial cup, contact Customer Service at 1-407-601-2431
-

Section 5

Limited One Year Warranty

Your JavaJig Coffee™ product is covered by a one-year limited warranty from the date of purchase. Should your JavaJig Coffee™ product have a defect in product material or workmanship within the first year of purchase, JavaJig Coffee™ will arrange to have your original product returned to us, and will deliver an identical or comparable replacement to you, free of charge.

DO NOT RETURN PRODUCT TO THE STORE:

Please follow these instructions to receive faster service: Note the product model number and batch code (this is a 3 or 4 digit number). These numbers are usually located on the back or underside of the product, either on a sticker or an imprinted graphic. Have the original or a copy of the sales receipt.

TO CONTACT JavaJig Coffee™:

JavaJig Coffee™ USA
7566 Southland Blvd. #100
Orlando FL 32809
Telephone: 1-407-601-2431

If the product, or one of its parts, qualifies for replacement or service under the Warranty, JavaJig Coffee™ will send a pre-paid shipping label via email so that the product may be sent to JavaJig Coffee™ at no cost to you. Upon receipt of the product, JavaJig Coffee™ may ship the replacement or contact you with further information regarding repair of the product.

Typical turn around time to address Warranty claims is 10-15 business days, plus shipping, depending on your geographical location and type of damage or Warranty claim.

IMPORTANT:

Do not send any product back to JavaJig Coffee™ without a Return Authorization.

Call our Customer Service Line: 1-407-601-2431, send us an email to info@javajigcoffee.cr or mail us your request so that we can send you specific instructions. Thank you. Listed below are the warranties for JavaJig Coffee™ Brewers.

LIMITED WARRANTY FOR JavaJig Coffee™:

Effective for all purchases after December 15, 2014 This limited warranty covers your new JavaJig Coffee™ Brewer for one year.

TRANSPORT:

When sending the brewer, use the original packing materials, the inner and outer cartons. If the original packaging is no longer available, use at least 2 pieces of bubble wrap and insert brewer in a carton which holds at least 40 lbs. **Important:** Any damage in transit, including scratches, breaks and indentation in the housing of the brewer is NOT covered by this warranty.

THIS WARRANTY DOES NOT COVER:

- Any brewer NOT distributed by JavaJig Coffee™ Inc. within the United States.
- Any brewer not purchased from an Authorized JavaJig Coffee™ Outlet. (Call our customer service department to check for authorized outlets).
- Any brewer purchased through EBAY.
- Damage caused by accident, abuse, negligence, misuse.
- Improper operation or failure to follow instructions contained in this manual.
- Any service or alteration performed by an unauthorized person, company or association.
- Damage caused by neglecting and omitting maintenance, cleaning and decalcifying cycles.
- Damage caused by use of instant coffee or any other ingredients not allowed in this product.

Section 5

Limited One Year Warranty (continued)

OTHER LIMITATIONS AND EXCLUSIONS:

Any implied warranties including fitness for use and merchantability are limited in duration to the period of the express warranty set forth above and no person is authorized to assume for JavaJig Coffee™ any other liability in connection with the sale of the brewer. JavaJig Coffee™ expressly disclaims liability for incidental and consequential damages caused by the brewer. The terms “incidental damages” refer to the loss of the original purchasers time, loss of the use of the brewer or other costs relating to the care and custody of the brewer. The terms “consequential damages” refer to the cost of repairing or replacing other property which is damaged when this brewer does not work properly. Any loss of income is excluded. The remedies provided under this warranty are exclusive and in lieu of all others. This warranty gives you specific legal rights, and you may also have other rights which vary from state to state.

JavaJig Coffee™, Inc.
7566 Southland Blvd., #100 Orlando, FL 32809
www.javajigcoffee.cr • info@javajigcoffee.cr



JavaJig Coffee™ Brewer Specifications

Brewer Size (L×W×H)	9.92 in x 7.87 in x 12.05 in 252 mm × 200 mm × 306 mm
Gross Weight / Net Weight	3.44 lbs / 3.34 lbs 1.56 kg / 1.54 kg
Rated Voltage	AC 110-120V
Rated Frequency	60Hz
Rated Power	1450W
Water Reservoir Capacity	11.83 fl oz 350 ml
Drip Tray Capacity	1.69 fl oz 50 ml
Suitable Cartridge	JavaJig®, K-Cup®



CONTACT JAVAJIG COFFEE® AT: WWW.JAVAJIGCOFFEE.CR • INFO@JAVAJIGCOFFEE.CR

© 2015 JAVAJIG COFFEE®, INC. ALL RIGHTS RESERVED.



JavaJig Coffee®, Inc.
7566 Southland Blvd., #100
Orlando, FL 32809



For Household Use Only

U.S. Patent Pending

P/N 60-201202-000 Rev E 07/12